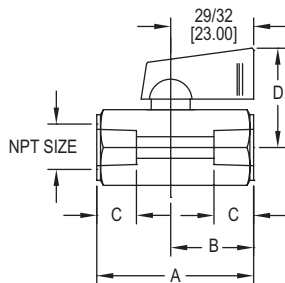
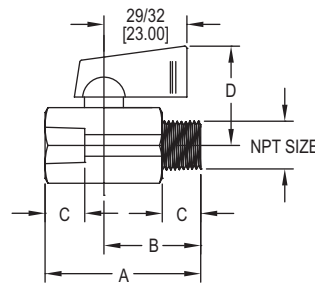


MINI STAINLESS STEEL BALL VALVE

Economical, Wide Chemical Compatibility, Compact



Female X Female Connection
SMV2-WFX



Male X Female Connection
SMV2-WMX

The **SERIES SMV2** Mini Stainless Steel Ball Valves are ideal for small, confined spaces, where larger valves are unsuitable. The 316SS and PTFE wetted materials are excellent for applications with corrosive media. The handles are made of a rigid nylon for extended durability. Installation is made easy with a choice of FxF or MxF process connections. PTFE ball seats provide broad media compatibility and bubble tight shutoff.

FEATURES/BENEFITS

- High working pressure
- Abrasion resistant
- Easy to install
- Economical
- Wide chemical compatibility

MODEL CHART		
Pipe Size	Female x Female Model	Male x Female Model
1/8"	SMV2-WF1	SMV2-WM1
1/4"	SMV2-WF2	SMV2-WM2
3/8"	SMV2-WF3	SMV2-WM3
1/2"	SMV2-WF4	SMV2-WM4

SPECIFICATIONS

Service: Gases and liquids compatible with wetted materials. Not rated for steam use.

End Connections: NPT, see model chart.

Pressure Limits: 1/8" to 3/8", 1000 psi (68.9 bar) WOG; 1/2", 800 psi (51.1 bar) WOG.

Temperature Limits: 212°F (100°C) maximum.

Wetted Materials: Valve Body: Cast 316 SS (CF8M); Valve Ball, Insert and Stem: 316 SS; Ball Seat: PTFE.

Agency Approvals: Meets the technical requirements of EU Directive 2011/65/EU (RoHS II).