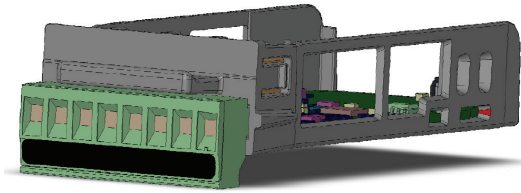


# F4T/D4T Flex Module Quick Start Guide



## Modbus® RTU Communications FMCA- [2]AAA-A \_ \_ \_



1241 Bundy Boulevard., Winona, Minnesota USA 55987

Phone: +1 (507) 454-5300, Fax: +1 (507) 452-4507 <http://www.watlow.com>

0600-0095-0000 Rev. C

Made in the U.S.A.



November 2016

1 2  
3 4

### Installation and Wiring

To install the flex module:

1. Turn off power to the device.
2. This module must be installed in slot 6. If replacing a module, remove the old module.
3. Affix slot number "6" labels (provided) to the module and to the removable screw terminal block.
5. With the component side of the module facing right (viewing the device from the rear) insert the module in to the slot until it latches.
6. Remove the screw terminal block from the module.
7. Wire field bus to the appropriate terminals. Wiring details are provided below.
8. Reconnect the wired screw terminal block to the module. Be sure to reconnect the terminal block to the correct module.
9. Restore power to the device.

#### Note:

If the flex module is a replacement with the same part number the F4T/D4T will use it immediately when powered up. Otherwise, use Composer software to configure the F4T/D4T to expect and use the module.

### Module Characteristics

#### Description and Identification

Many of the modules appear to look alike at first glance, therefore, it is always recommended that the module part number be verified prior to plugging it into any of the available slots in a base. Each module is identified with a part number located on the back side of the assembly next to screw terminal block, as displayed in the graphic below.



### Document Overview

The purpose of this Quick Start Guide (QSG) is to acquaint the user with the F4T/D4T communications Flex Modules and associated wiring.

### Product Overview

F4T/D4T communications modules provide the necessary connections to various industrial fieldbus networks.

### Available F4T/D4T Literature and Resources

All of the user documents listed below can be found on the Watlow website: <http://www.watlow.com> The Watlow Support Tools DVD can be acquired by contacting Watlow customer service (507-494-5300).

Document Title and Part Number	Description
F4T Installation and Troubleshooting User Guide, part number: 0600-0092-0000	Provides detailed specifications and information regarding mounting the F4T base, flex module wiring and troubleshooting.
F4T Setup and Operations User Guide, part number: 0600-0093-0000	Explains how to configure and operate the device for an application using Composer software as well as the user interface (touch screen). Includes detailed descriptions of all device features and parameter settings.
D4T Installation and Troubleshooting User Guide, part number: 0600-0107-0000	Provides detailed specifications and information regarding mounting the base, flex module wiring and troubleshooting.
D4T Setup and Operations User Guide, part number: 0600-0106-0000	Explains how to configure the datalogger for an application using the user interface and Composer software. Includes detailed descriptions of all data logger features and parameter settings.

### Wiring

#### Note:

Wire size and torque for screw terminations:

- 0.0507 to 3.30 mm<sup>2</sup> (30 to 12 AWG) single-wire termination or two 1.31 mm<sup>2</sup> (16 AWG)
- 0.57 Nm (5.0 lb.-in.) torque

#### Note:

To prevent damage to the device, do not connect wires to unused terminals.

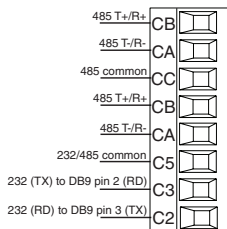
#### Note:

Modules IP10 when properly installed in base enclosure.

**Wiring (cont.)**

**\*EIA-232/485 Modbus RTU**

FMCA - [2] A A A - A \_ \_ \_



- Wire T-/R- to the A terminal of the EIA-485 port.
- Wire T+/R+ to the B terminal of the EIA-485 port.
- Wire common to the common terminal of the EIA-485 port.
- Do not route network wires with power wires.
- Connect network wires in daisy-chain fashion when connecting multiple devices in a network.
- A termination resistor may be required. Place a 120 Ω resistor across T+/R+ and T-/R- of last device on network.
- Do not wire to both the EIA-485 and the EIA-232 pins at the same time.
- Two EIA-485 terminals of T/R are provided to assist in daisy-chain wiring.
- Do not connect more than one F4T/D4T on an EIA-232 network.
- Maximum number of devices on a Modbus network is 247.
- Maximum EIA-232 network length: 15 meters (50 feet)
- Maximum EIA-485 network length: 1,200 meters (4,000 feet)
- 1/8th unit load on EIA-485 bus.

Modbus-IDA Terminal	EIA/TIA-485 Name	Watlow Terminal Label	Function
DO	A	CA or CD	T-/R-
D1	B	CB or CE	T+/R+
common	common	CC or CF	common

**\*Note:**

This communications card must be inserted in slot 6.

**Specifications**

- EIA 232/485, Modbus® RTU (see vendor specifications: <http://www.modbus.org>)

**Warranty**

F4T/D4T Flex modules are manufactured by ISO 9001 registered processes and are backed by a three-year warranty to the first purchaser for use, providing that the modules have not been misapplied.

**Technical Assistance**

To get assistance from Watlow:

- Contact a local representative: see last page
- E-mail: [wintechsupport@watlow.com](mailto:wintechsupport@watlow.com)
- Call: +1 (507) 494-5656 from 7 a.m. to 5 p.m. Central Standard Time (CST)

This F4T/D4T Quick Start Guide (QSG) is copyrighted by Watlow Electric Manufacturing Company, © November 2016 with all rights reserved.

5 6  
7 8

**Series EZ-ZONE® Flex Modules**

WATLOW Electric Manufacturing Company

ISO 9001 since 1996.



1241 Bundy Blvd.  
Winona, MN 55987 USA

Declares that the following products:

Designation: **Series EZ-ZONE® Flex Modules**

Model Numbers: FMLA-(LAJ, LCL, LEJ, MAJ, MCJ, MEJ, YEB)'A'-A'(A',F',B',G)'X'X'  
FMMA-X'(A',C',E',F',K)(A',C',H,J,K)A'-A'(A',F',B',G)'X'X'  
FMHA-(R',P',C',F',B',J,K,L)'A'A'-A'(A',F',B',G)'X'X'  
'FMCA-XAAA-A(A,F,B,G)XX; Note: X' = Any letter or number

Classification: FMLA, FMMA and FMHA are Process Control modules, FMCA are Communication modules; Modules are Integrated Controls in either EZ-ZONE® CC, F4T or D4T Bases; Modules are IPI0 when properly installed.

Rated Voltage and Frequency: Relay, SSR or No-Arc Control outputs 24 to 240 V- (ac) 50/60 Hz, Switched DC, Process and communications; low voltage SELV

Rated Power: See manual for de-rating at increased temperatures.

Consumption: No-arc relays 15A 1.C, Dual SSR module 1.C 10A each output, Mechanical relay 5A 125 VA, 25 VA at 24 V- (ac) 1.B, Discreet SSR 1/2A 1.C 20VA, Quad SSR 1.C 1.5A 50 VA, Hex I/O ELV 1.5A, all others SELV limited energy.

Flex Modules are considered components and have no function in and of themselves, it is only when installed in a Watlow EZ-ZONE® CC, Series F4T or Series D4T Base enclosure that they have useful function. Modules were tested as parts of these systems for compliance with the following directives.

**2014/30/EU Electromagnetic Compatibility Directive**

EN 61326-1:2013 Electrical equipment for measurement, control and laboratory use - EMC requirements (Industrial Immunity, Class B Emissions).

**2014/35/EU Low-Voltage Directive**

EN 61010-1:2010 Safety Requirements of electrical equipment for measurement, control and laboratory use. All options compliant

EN 60730-1:2011 Automatic electrical controls for household and similar use - Particular requirements for temperature sensing controls.

EN 60730-2-9:2010 Food Service Only certain output options comply with 60730 spacing and dielectric requirements, see order information for compatible models.

**Compliant with 2011/65/EU RoHS2 Directive**

Per 2012/19/EU W.E.E Directive Please Recycle Properly.

See the Declarations of Conformity for Watlow EZ-ZONE® CC, Series F4T and Series D4T models for further details on standards used for compliance.

Joe Millanes Winona, Minnesota, USA  
Name of Authorized Representative Place of Issue  
Directory of Operations April 20, 2016  
Title of Authorized Representative Date of Issue

Signature of Authorized Representative

**How to Reach Us**

**Corporate Headquarters**

Watlow Electric Manufacturing Company  
12001 Lackland Road  
St. Louis, MO 63146  
Sales: 1-800-WATLOW2  
Manufacturing Support: 1-800-4WATLOW  
Email: [info@watlow.com](mailto:info@watlow.com)  
Website: [www.watlow.com](http://www.watlow.com)  
From outside the USA and Canada:  
Tel: +1 (314) 878-4600  
Fax: +1 (314) 878-6814

**Latin America**

Watlow de México S.A. de C.V.  
Av. Fundación No. 5  
Col. Parques Industriales  
Querétaro, Qro. CP-76130  
Mexico  
Tel: +52 442 217-6235  
Fax: +52 442 217-6403

Watlow Italy S.r.l.  
Viale Italia 52/54  
20094 Corsico MI  
Italy  
Tel: +39 024588841  
Fax: +39 0245869954  
Email: [italyinfo@watlow.com](mailto:italyinfo@watlow.com)  
Website: [www.watlow.it](http://www.watlow.it)

**Asia and Pacific**

Watlow Singapore Pte Ltd.  
20 Kian Tech Lane 4th Floor  
Singapore - 627854  
Tel: +65 6773 9488 Fax: +65 6778 0323  
Email: [info@watlow.com.sg](mailto:info@watlow.com.sg) Website: [www.watlow.com.sg](http://www.watlow.com.sg)

Watlow Australia Pty., Ltd.  
4/57 Sharps Road  
Tullamarine, VIC 3043  
Australia  
Tel: +61 3 9335 6449  
Fax: +61 3 9330 3566  
Website: [www.watlow.com](http://www.watlow.com)

Watlow Electric Manufacturing (Shanghai) Company  
1118 Fanyuan Road, Anting Industrial Park, Jiading, Shanghai,  
PRC 201203  
People's Republic of China  
Tel: +86 21 39509510  
Fax: +86 21 5080-0906  
Email: [info@watlow.cn](mailto:info@watlow.cn)  
Website: [www.watlow.cn](http://www.watlow.cn)

ワトロー ジャパン株式会社  
〒101-0047 東京都千代田区内神田1-14-4  
四国ビル別館9階  
Tel: 03-3518-6630 Fax: 03-3518-6632  
Email: [info@watlow.com](mailto:info@watlow.com) Website: [www.watlow.co.jp](http://www.watlow.co.jp)

Watlow Japan Ltd.  
1-14-4 Uchikanda, Chiyoda-Ku  
Tokyo 101-0047  
Japan  
Tel: +81-3-3518-6630 Fax: +81-3-3518-6632  
Email: [info@watlow.com](mailto:info@watlow.com) Website: [www.watlow.co.jp](http://www.watlow.co.jp)

**Europe**

Watlow France  
Tour d'Asnières  
4 Avenue Laurent Cély  
92600 Asnières sur Seine  
France  
Tel: + 33 (0)1 41 32 79 70  
Télécopie: + 33(0)1 47 33 36 57  
Email: [info@watlow.fr](mailto:info@watlow.fr)  
Website: [www.watlow.fr](http://www.watlow.fr)

Watlow GmbH  
Postfach 11 65, Lauchwasenstr. 1  
D-76709 Kronau  
Germany  
Tel: +49 (0) 7253 9400-0  
Fax: +49 (0) 7253 9400-900  
Email: [info@watlow.de](mailto:info@watlow.de)  
Website: [www.watlow.de](http://www.watlow.de)

Watlow UK Ltd.  
Linby Industrial Estate  
Linby, Nottingham, NG15 8AA  
United Kingdom  
Telephone: (0) 115 964 0777  
Fax: (0) 115 964 0071  
Email: [info@watlow.co.uk](mailto:info@watlow.co.uk)  
Website: [www.watlow.co.uk](http://www.watlow.co.uk)  
From outside The United Kingdom:  
Tel: +44 115 964 0777  
Fax: +44 115 964 0071

Watlow Ibérica, S.L.U.  
C/Marte 12, Posterior, Local 9  
E-28850 Torrejón de Ardoz  
Madrid - Spain  
T. +34 91 675 12 92  
F. +34 91 648 73 80  
Email: [info@watlow.es](mailto:info@watlow.es)  
Website: [www.watlow.es](http://www.watlow.es)

Watlow UK Ltd.  
Linby Industrial Estate  
Linby, Nottingham, NG15 8AA  
United Kingdom  
Telephone: (0) 115 964 0777  
Fax: (0) 115 964 0071  
Email: [info@watlow.co.uk](mailto:info@watlow.co.uk)  
Website: [www.watlow.co.uk](http://www.watlow.co.uk)  
From outside The United Kingdom:  
Tel: +44 115 964 0777  
Fax: +44 115 964 0071

Watlow Korea Co., Ltd.  
22208, Hyundai KIC Building B, 70 Doosan-ro  
Geumcheon-gu, Seoul  
Republic of Korea  
Tel: +82 (2) 2169-2600 Fax: +82 (2) 2169-2601  
Website: [www.watlow.co.kr](http://www.watlow.co.kr)

Watlow Malaysia Sdn Bhd  
No. 14-3 Jalan 2/114  
Kuchai Business Centre  
Jalan Kuchai Lama  
58200 Kuala Lumpur  
Malaysia  
Tel: +60 3 7980 7741 Fax: +60 3 7980 7739

瓦特能電機股份有限公司  
80143 高雄市府前金區七賢二路189號10樓之一  
電話: 07-2885168 傳真: 07-2885568

Watlow Electric Taiwan Corporation  
10F-1 No.189 Chi-Shen 2nd Road Kaohsiung 80143  
Taiwan  
Tel: +886-7-2885168 Fax: +886-7-2885568

**Your Authorized Watlow Distributor**

