

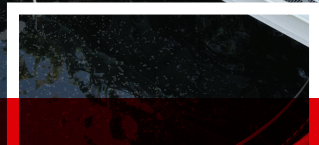


BRANOM

INSTRUMENT CO.

Est. 1947

TEST | MEASURE | AUTOMATE | HEAT



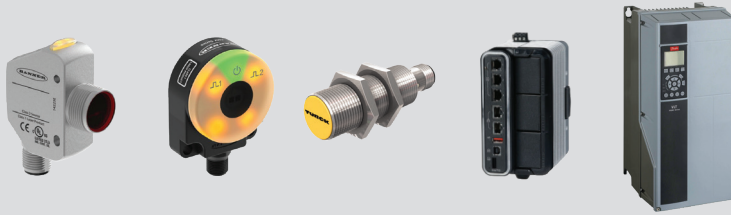
DISTRIBUTION PRODUCTS



Automation

BANNER | DANFOSS | FORTRESS | RED LION | TURCK

- AC Drives
- Controllers
- Data Acquisition
- Encoders
- Fluid Control
- HMI/Displays



- Industrial Computing
- Machine Safety
- Machine Vision
- Pneumatics
- Sensors
- Soft Starters



Communications

API | BANNER | RED LION | TURCK

- Cloud Solutions
- Communication Software
- Connectors & Cordsets



- Ethernet
- Industrial Cellular
- Protocol Converter
- Signal Conditioner
- Wireless



Electrical

ATTABOX | BANNER | PULS | RED LION

- Breakers
- Current Transformers
- DIN Rail
- Enclosures
- Lighting



- Panel Meters
- Power Supplies
- Power Transducers
- Relays
- Resistors



Flow

CANALTA | EPI | FLOMEC | GEMS | KROHNE

- Actuators
- Air Preparation
- Flow Meters
- Flow Indicators



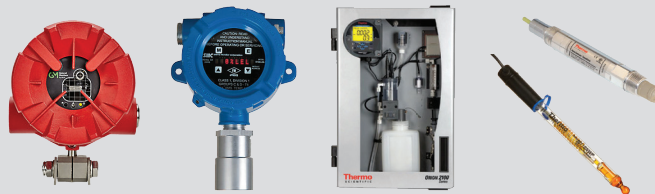
- Flow Switches
- Pumps
- Thermal Dispersion
- Valves



Gas & Liquid Analytics

DWYER | MSA SAFETY | SENSOR ELECTRONICS | THERMO ORION

- Ambient Air Monitoring
- Analytical Assemblies
- Analytical Systems
- Continuous Analyzers
- Flame Detection



- Gas Analysis Systems
- Multi Gas Analyzers
- Sensors
- Toxic Gas Detectors
- Transmitters

KROHNE

FLOW, LEVEL, PRESSURE, TEMPERATURE & LIQUID ANALYTICAL EQUIPMENT

For Industrial, Food & Beverage, Utility, Pharmaceutical and Manufacturing Applications



ThermoFisher
SCIENTIFIC

LIQUID ANALYTICS

For Environmental & Industrial Applications



MSA

The Safety Company

SOLUTIONS

For Combustible, Toxic Gas Systems & Flame Detection Systems





Level

BINDICATOR | DWYER | GEMS | KROHNE | NOSHOK

- Continuous Level Measurement
- Floats
- Paddle Switches
- Point Level Measurement



- Radar
- Sensors
- Tank Level Indicators
- Ultrasonic



Pressure

AUTROL | BARKSDALE | CECOMP | NOSHOK | TESCOM | WIKA

- Diaphragm Seals
- Filters
- Pressure Controllers
- Pressure Gauges



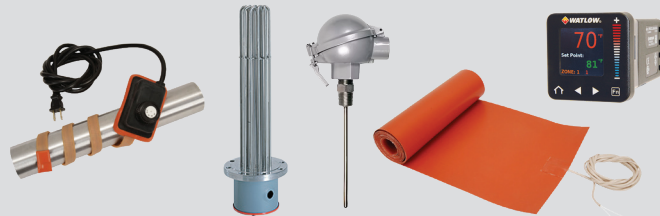
- Pressure Regulators
- Pressure Switches
- Pressure Transducers
- Pressure Transmitters



Temperature

EUROTHERM | PYROMATION | TEMPCO | WATLOW

- Controllers
- Heaters
- Infrared Pyrometers
- RTDs
- Temperature Indicators
- Temperature Switches



- Temperature Transmitters
- Thermal Imagers
- Thermocouples
- Thermometers
- Thermowells



Test & Measure

AEMC | ARBITER | FLUKE | SHIMPO

- Anemometers
- Backflow Test Kits
- Cable Length Meters/Testers
- Calibrators
- Clamp-On Meters
- Current Probes



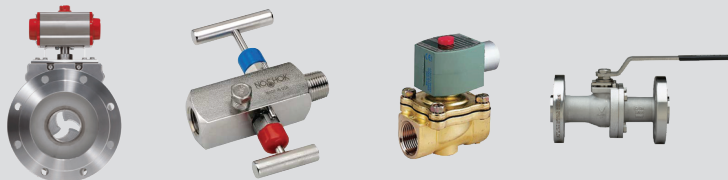
- Data Loggers
- Digital Multimeters
- Electrical Test Tools
- Environmental Testers
- Tachometers
- Thermal Imaging
- Torque Meters



Valves

AMPO POYAM | ASCO | BONOMI | NOSHOK | TESCOM

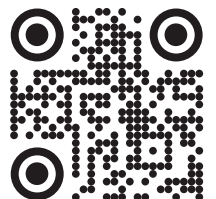
- Actuators
- Ball Valves
- Butterfly Valves
- Check Valves
- Control Valves



- Dilating Disk Valves
- Directional Control
- Instrument Valves
- Solenoid Valves
- PRVs



FOR OUR FULL LIST OF MANUFACTURERS: BRANOM.COM



WE OFFER A FULL COMPLEMENT OF SERVICES TO SUPPORT YOUR EQUIPMENT:

ON-SITE

- ✓ Calibration
- ✓ Troubleshooting
- ✓ Regular Maintenance
- ✓ Start-up
- ✓ Commissioning

IN-HOUSE

- ✓ Calibration
- ✓ Repair
- ✓ Test & Measurement Equipment

**N.I.S.T. TRACEABLE
CALIBRATION
CERTIFICATES**

**UL508A CERTIFIED
INDUSTRIAL CONTROL
PANEL SHOP**

**BACKFLOW
TEST KIT SERVICE
EXPERTS**

TECHNICAL SERVICES

Highly trained & certified service personnel to provide testing, maintenance, and repair of state-of-the-art test & measurement equipment.

FACTORY TRAINED AND CERTIFIED TECHNICIANS:



BRANOM

INSTRUMENT CO.

Corporate Office

5610 4th Ave So.
Seattle, WA 98108
206-762-6050

Satellite Offices

Spokane, WA
Portland, OR
Anchorage, AK
Boise, ID
Sacramento, CA
San Francisco, CA



FOR A QUOTE OR
MORE INFORMATION:
SALES@BRANOM.COM



INSTRUMENT SERVICE FORM:
BRANOM.COM/SERVICE

