



Single Rod shown with X1 Process Fitting, including 3/4 in. 316 SS NPT

## SIMPLICITY AT ITS BEST WITH CONSISTENT RESULTS

Pulse Point™ II Series models sense when a material reaches or leaves a particular point. These point level switches use electronic vibratory technology to sense the material. This mechanical operation is not affected by the dielectric constant of the material being measured.

The vibrating rod is designed so that the sensing mechanism is located in the tip of the rod. This design allows for the 3/4" NPT process fitting connection - one of the smallest in the industry. This device is also able to be used in hazardous locations, widening its range of applications.

## FEATURES AND BENEFITS

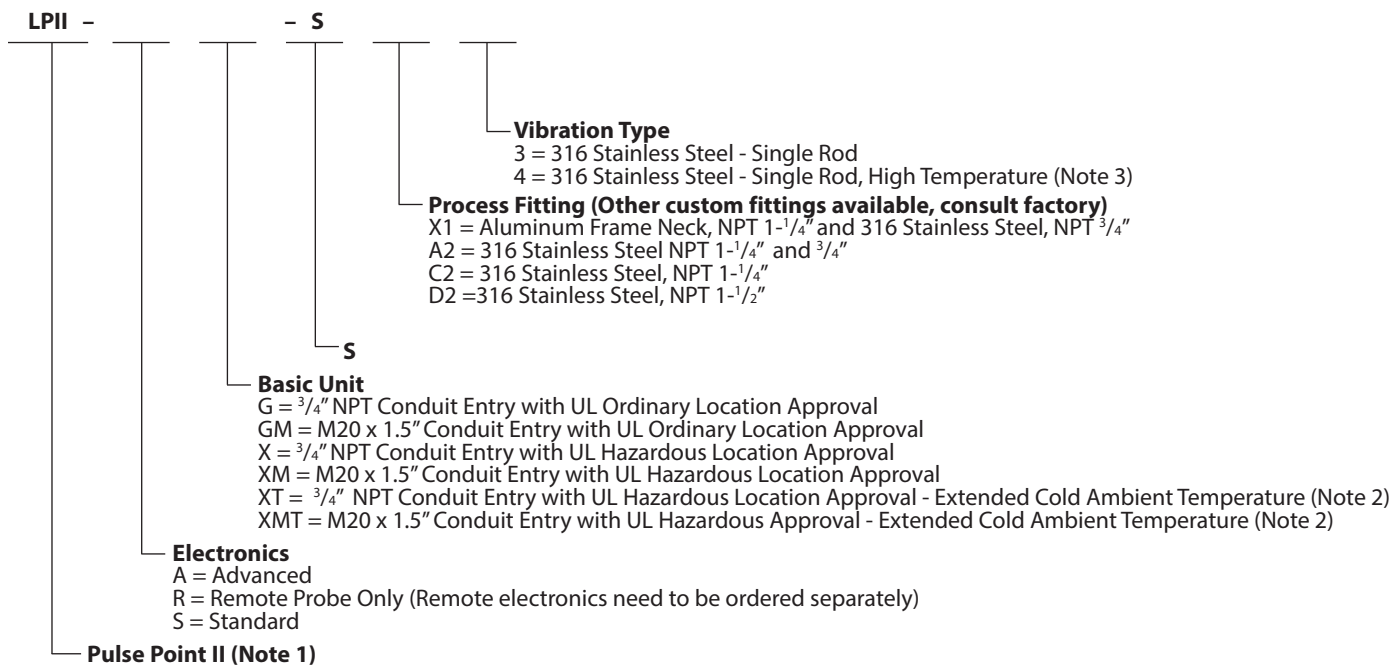
- 3/4" in. NPT process fitting.
- Universal Input Power provides flexibility.
- Adjustable Time Delay allows the user to determine time between sensing material and the alarm state. Advanced units can permit delays when it detects the presence and absence of material or a combination.
- Sensitivity Settings can be selected to fit specific applications and material requirements down to 3 lbs/ft<sup>3</sup> (48 kg/m<sup>3</sup>).
- Move electronics up to 50 ft (15 m) away with the Remote Option.
- Standard and Advanced offering enables the user to choose the option that best suits the application.
- Design allows for resistance to side wall build-up.
- Frame designed to enable connection flexibility: Imperial or Metric conduit entry options. Process Fitting can be made to fit any connection.

## STANDARD VS. ADVANCED UNITS

STANDARD	ADVANCED
2 Sensitivity Settings	3 Sensitivity Settings
Time Delay up to 6 seconds	Time Delay up to 150 seconds
Universal Power	Universal Power
	Test FOB
Push Button Test	Push Button Test
	Indicator Lights

# Pulse Point™ II ROD

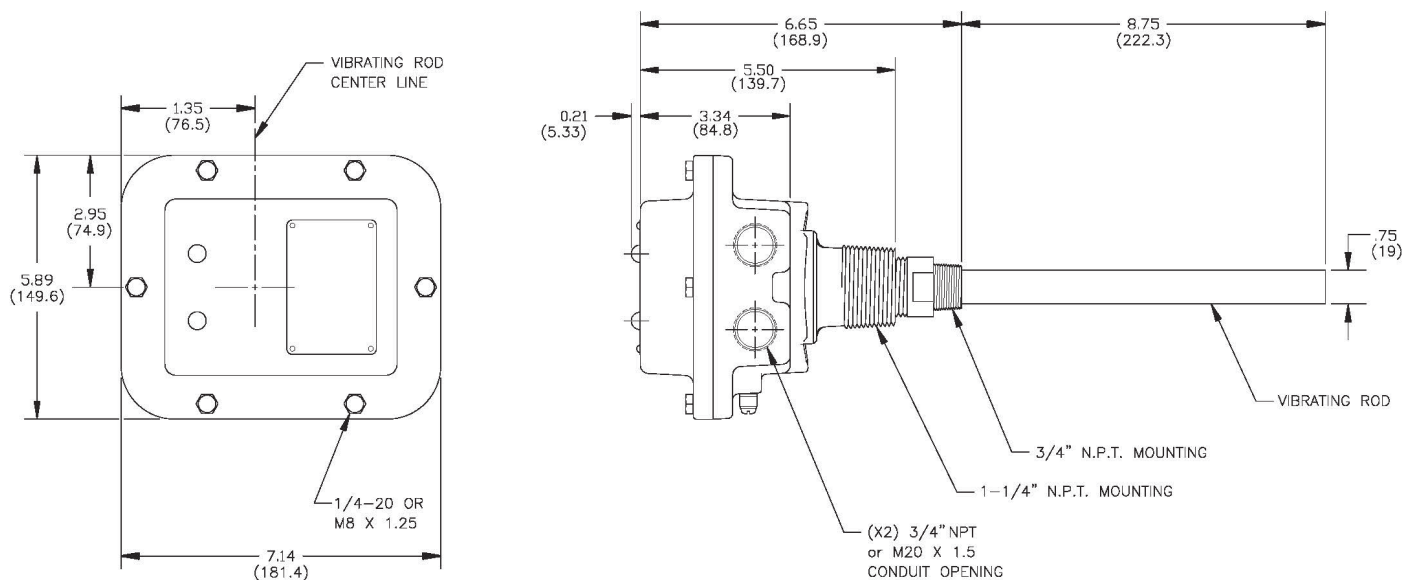
## PULSE POINT II - STANDARD



- NOTES: 1. Units have Powder Coated Aluminum Housing Finish.  
 2. Extended cold ambient temperature is -40° F (-40° C).  
 3. High temperature: up to 160° C process temperature.

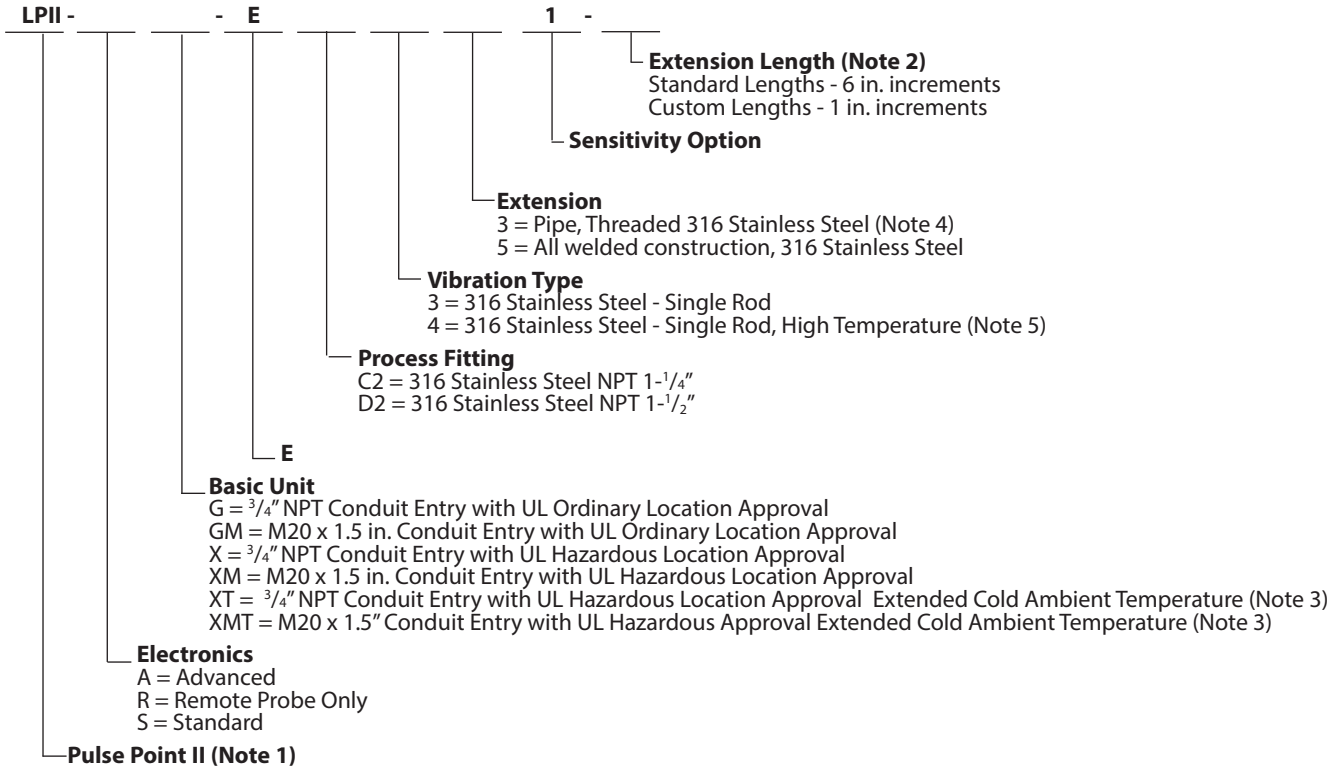
## STANDARD ROD DIMENSIONS

### ADVANCED MODEL SHOWN



\* Additional drawings available at [www.bindicator.com](http://www.bindicator.com)

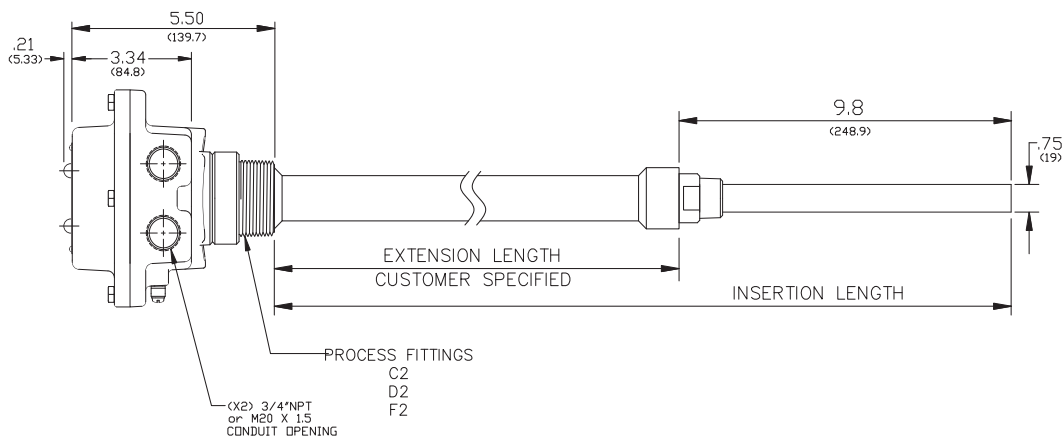
## PULSE POINT II - EXTENSIONS



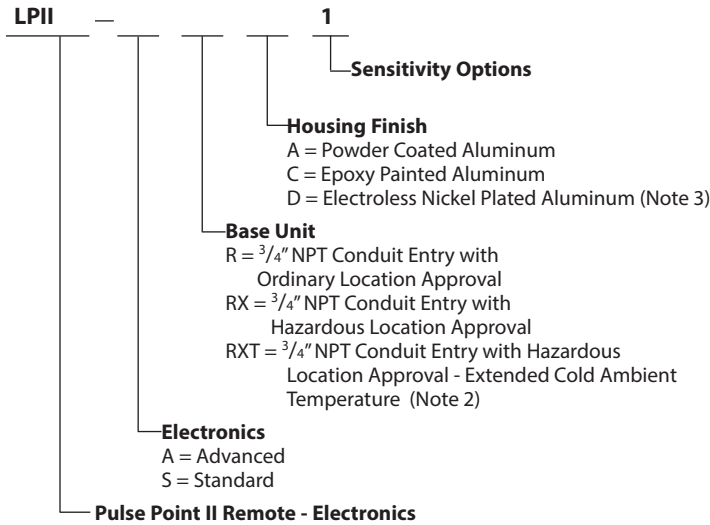
- NOTES: 1. Units have Powder Coated Aluminum Housing Finish.  
2. Maximum extension length is 72 in. (1.8 m), minimum length 3 in. (7.6 cm)  
3. Extended cold ambient temperature is -40° F (-40° C)  
4. Type 3 Extension not available for Hazardous Location units.  
5. High temperature: up to 160° C process temperature.

## EXTENSION DIMENSIONS

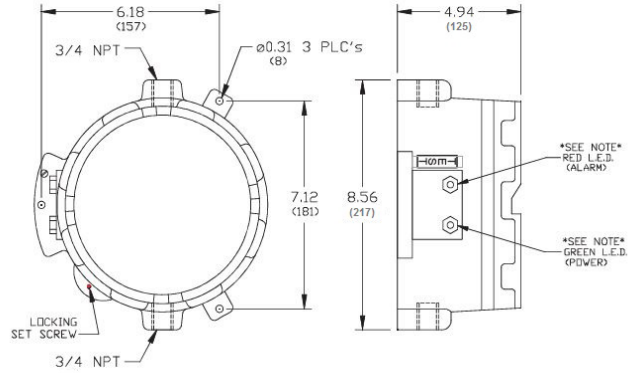
### ADVANCED MODEL SHOWN



## REMOTE ELECTRONICS



## REMOTE DIMENSIONS



- NOTES:
- Maximum cable length is 50 ft (15 m).
  - Extended cold ambient temperature is -40° F (-40° C).
  - Hazardous location approval not available with electroless nickel plated aluminum Housing Finish.

## SPECIFICATIONS

### FUNCTIONAL

Power Requirements Universal	(± 10%), 120-240 VAC 50/60 Hz or 24-48 VDC
Power Consumption	4 W AC; 4 W DC
Fuse	Slow Blow, 0.5 A 300 V (Not User Serviceable)
Operating Temperature	
Electronics: Ordinary Location	-40° to 158°F (-40° to 70°C)
Electronics: Hazardous Location	-4° to 158°F (-20° to 70°C)
Electronics: Hazardous Location - Extended	-40° to 158°F (-40° to 70°C)
Rod (Process): Standard Temperature	-22° to 203°F (-30° to 95°C)
Rod (Process): High Temperature	-22° to 320°F (-30° to 160°C)
Outputs	
Main Relay	8 A DPDT @ 240 VAC or 30 VDC (resistive)
Auxiliary Relay - ADVANCED Only	0.46 A SPDT @ 150 VAC or 1 A @ 30 VDC

### PERFORMANCE

Pressure Rating	150 psi (10.5 kg/cm <sup>2</sup> ) with 3/4" NPT process fitting; 50 psi (3.5 kg/cm <sup>2</sup> ) with 1 1/4" NPT process fitting
Time Delay - STANDARD	Field Adjustable; Up to 6 seconds
Time Delay - ADVANCED	Field Adjustable; Up to 150 seconds
Fail Safe	Field Selectable; high/low level
Sensitivity - STANDARD	Minimum 6 lbs/ft <sup>3</sup> (96 kg/m <sup>3</sup> ); Field Adjustable
Sensitivity - ADVANCED	Minimum 3 lbs/ft <sup>3</sup> (48 kg/m <sup>3</sup> ); Field Adjustable
Remote Distance	50 ft. (15m) Max

### PHYSICAL

Enclosure Material	Powder or Epoxy Coated Aluminum, or 304 SS
Process Fitting	NPT 3/4", 1-1/4", 1-1/2" BSP R 1-1/4", 1-1/2" BSP G 1-1/4", 1-1/2"
Rod Material	316 Stainless Steel
Dual Conduit Entry	3/4" NPT or M20 x 1.5
Mounting Plate Material	Mild Steel, 304 Stainless Steel
Extended Pipe Material	316 Stainless Steel
Shipping Weight	Integral, non-extended 9 lb (4 kg)

## AGENCY APPROVALS

### UL

- Ordinary Location, Type 4X; IP66 (**US and Canada**)
- Hazardous Location, Type 4X  
Explosion Proof, Class I, Div 1, Groups C, D (**US only**)  
Dust Ignition Proof, Class II, Div 1, Groups E, F, G (**US and Canada**)

### CE

- Electromagnetic Compatibility Directive
- Low Voltage Directive



150 Venture Boulevard · Spartanburg, SC 29306  
 Tel: (800) 778-9242 · (864) 574-8060  
 Fax: (864) 574-8063  
 E-mail: sales@bindicator.com  
 www.bindicator.com

**venture**  
MEASUREMENT

LVP181014 Rev. D  
 2016 All rights reserved.  
 All data subject to change without notice.